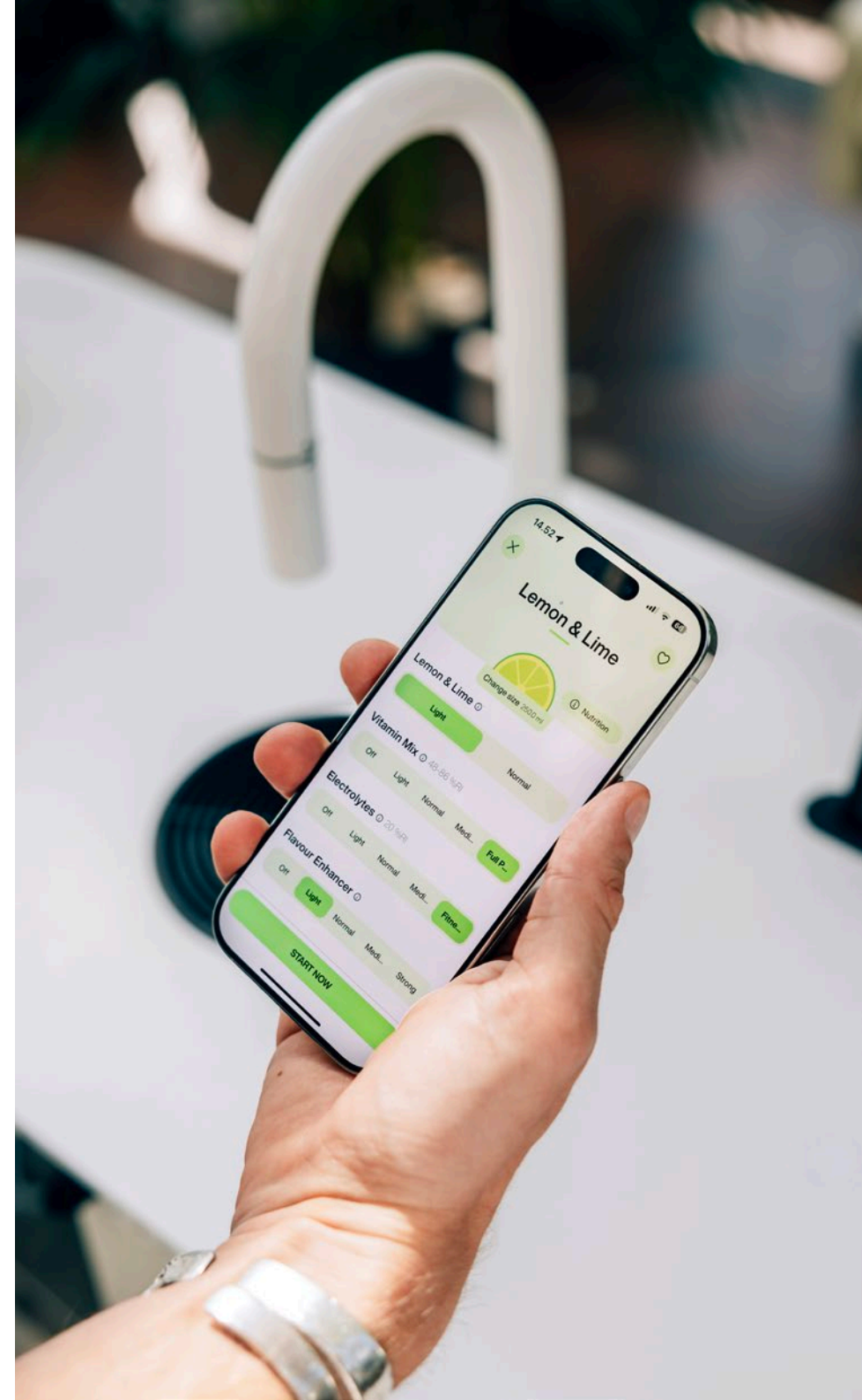




Top+health

Pre-Installation Guide

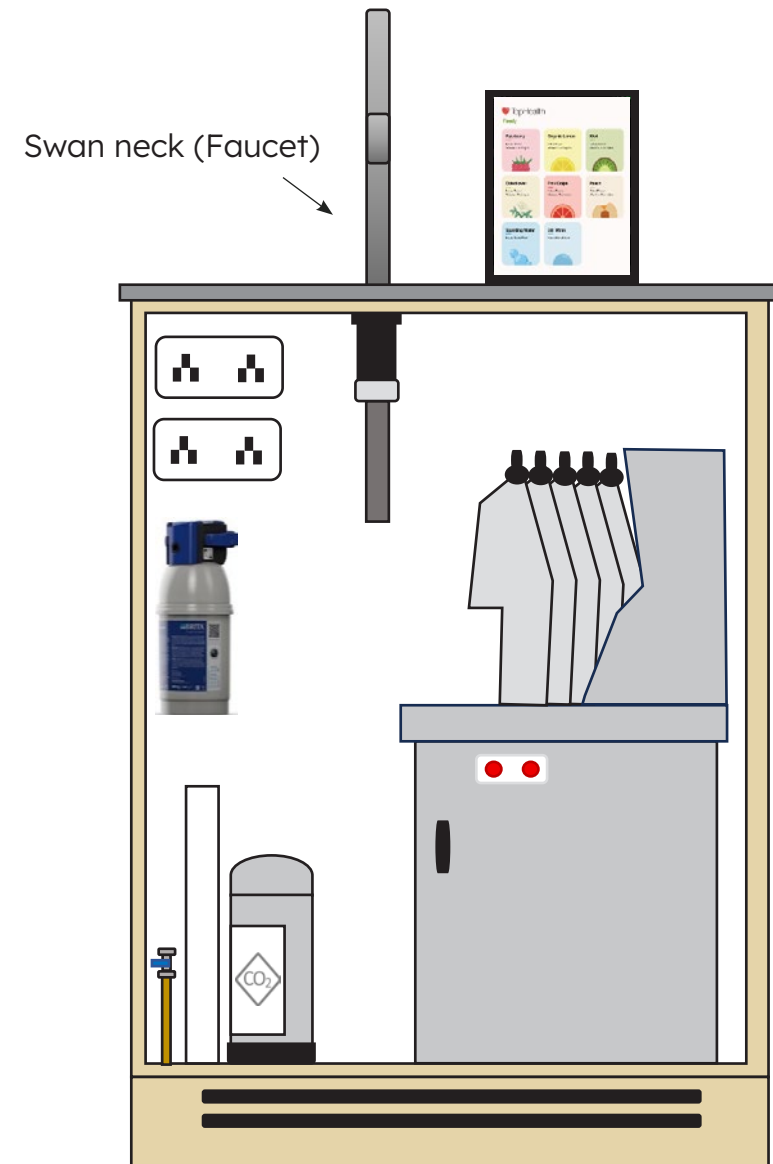
Handcrafted in Denmark.



| | |
|-------------------------------------|---|
| Overview | 3 |
| Cupboard Dimensions | 4 |
| Ventilation | 5 |
| Worktop Cut Out Distance Dimensions | 6 |
| Flush Mounted Drip Tray | 7 |
| Top Mounted Drip Tray | 8 |
| Checklist | 9 |

This illustration is to give a visual perspective of how the completed installation will look inside of the cupboards. Below is a list of **MANDATORY** pre- installation requirements before we can proceed with the installation:

1. There **MUST** be adequate space in the unit for the filters, water & power (as illustrated).
2. All services **MUST** be easily accessible for quick isolation in case of an emergency.
3. All sockets **MUST** be mounted at the top left corner of the back wall in the cupboard (as illustrated).
4. Correct cupboard dimensions (pg. 4).
5. Ventilation holes in kick plate and doors (pg. 5).
6. Worktop cut outs for swan neck, iPad holder and drip tray completed with the correct dimensions (pg. 6/7/8) & **MUST** be **cut** above the TopHealth cupboard (as illustrated).

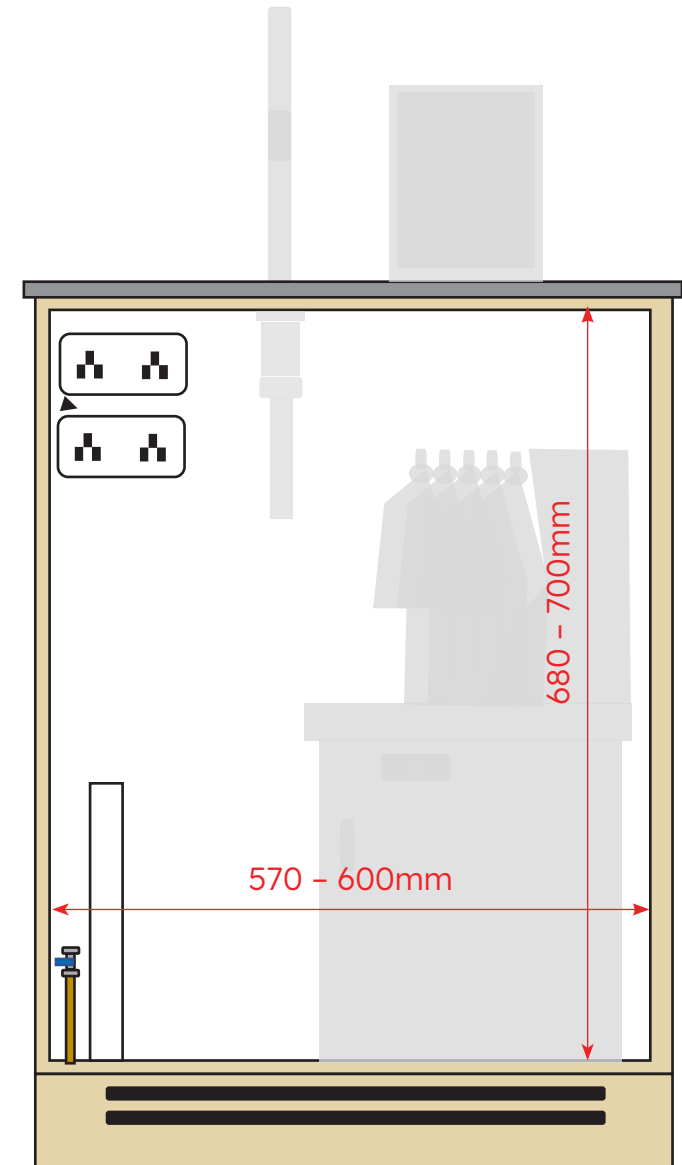


Cupboard Dimensions

TopHealth

Top+health

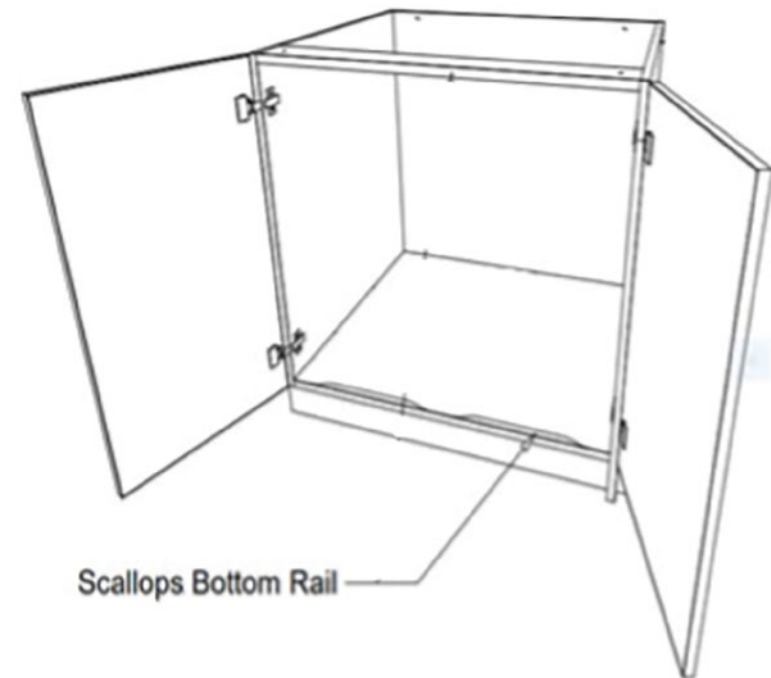
- All dimensions listed in red are internal
- Cupboard depth → 700mm



Adequate Ventilation is a requirement for TopHealth. The equipment generates heat that needs to vent out the cupboards. To enable air circulation, ventilation is required in top and bottom of cupboard.

Scalloping the base cupboard and routing ventilation in the top of the cupboard doors will be adequate ventilation for cool air to be drawn in and hot air to escape up and out. These cuts MUST always be at the very top of the cupboard

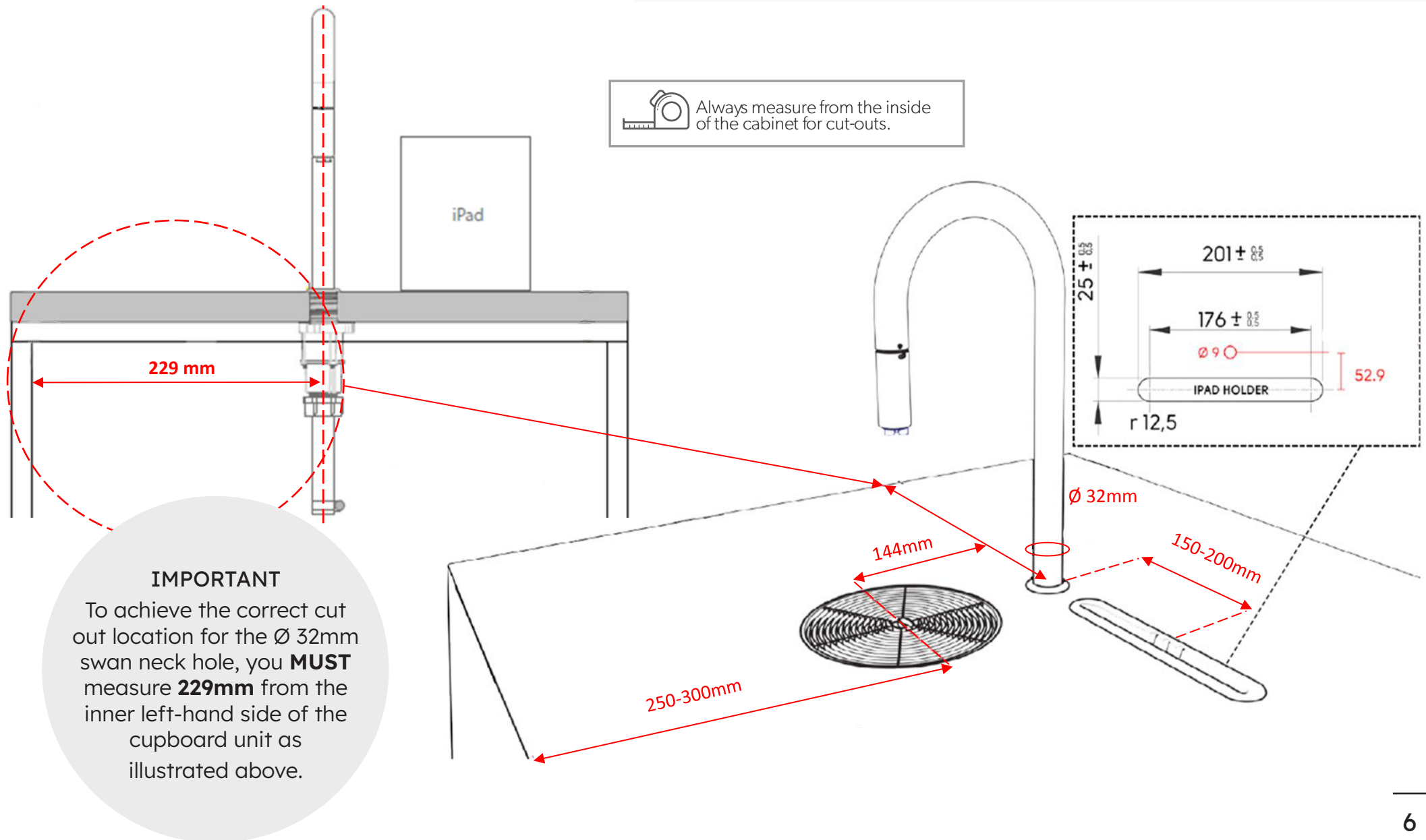
We recommend the routed vents be 300mm – 400mm in length, and 20mm in height. Scalloping should be at least 20mm into the base of the cupboard.



Worktop Cut Out Distance Dimensions

TopHealth Swan Neck (Faucet), iPad Holder & Drip Tray

TopHealth

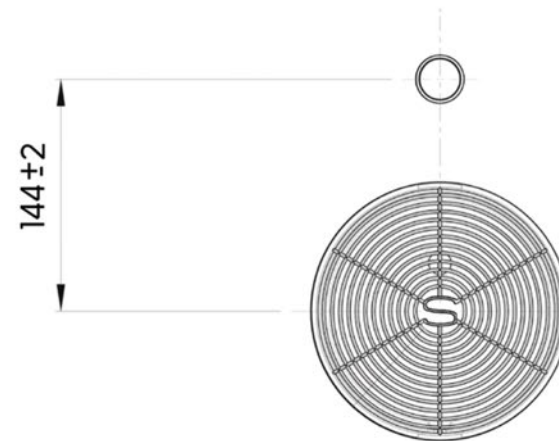
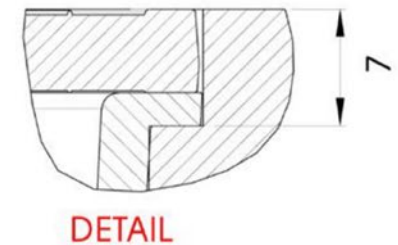
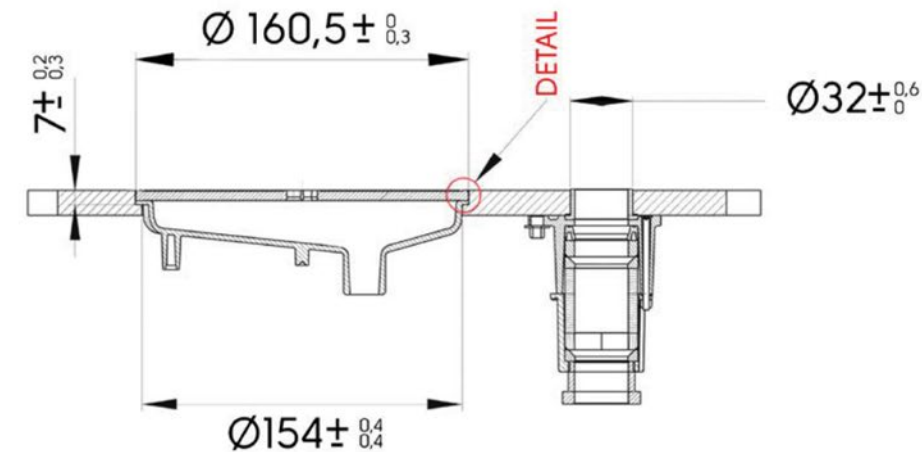


Flush Mounted Drip Tray (Recommended)

TopHealth

Top+health

This drip tray is to be used for hard surface worktops such as Marble, Granite & Corian. **NOT** to be used with wooden based materials such as chipboard, MDF etc. Please contact us for advice if required.



Drip Tray – Top-Mounted TopHealth

TopHealth

This drip tray is to be used for all types of wooden surface worktops i.e. Chipboard, MDF etc. Please contact us for advice if required.



SKU: 2006162a

Choose this option for solid materials such as steel countertops, veneer wood tops, non-solid woods and such.

Alternatively, see page 7 for the Countersunk version.

Easier to cut and to seal for materials with open pores.

Pre-Installation Checklist

TopHealth

Top+health

Electrical Connection

| | |
|--|--|
| | 2 x 10A double GPO |
| | Within cupboard of machine |
| | All Electrical must comply with AS/NZS3000 |

Water Supply

| | |
|--|---|
| | 1 x dedicated ½" BSP male fitting with shut off valve |
| | Water pressure at least 250kPa |
| | Water system must comply with AS/NZS3500.1 |

Waste

| | |
|--|--|
| | Vertical Ø50mm waste stack with standard u-bend, p-trap, or inline waterless trap and tun dish |
| | Wastewater system must comply with AS/NZS3500.2 |

Cabinetry

| | |
|--|--|
| | Internal dimensions of minimum 570mm x 700mm x 680mm (WxDxH), OR: |
| | Internal dimensions of minimum 570mm x 700mm x 685mm (WxDxH) if installing with optional safe tray |

Ventilation

| | |
|--|--|
| | Adequate ventilation provided (see page 5) |
|--|--|

Drip tray cut-out

| | |
|--|--|
| | Flush-mounted: Ø160.5mm/Ø154mm, countersunk hole (see page 7), OR: |
| | Top-mounted: Ø163mm hole (see page 8) |

Swan neck hole

| | |
|--|------------|
| | Ø32mm hole |
|--|------------|

iPad Holder

| | |
|--|--|
| | Ø20 mm hole for cable + 3 screw holes (see page 6) |
|--|--|



Signed off by:

Signature

Name

Date

Top+health

A beverage
revolution on tap.

scanomat.com/au

